



Student Manual:
Film Output Agfa Avantra SelectSet 25XT





Agfa SelectSet Avantra Model 25 XT

In a real world high-volume production environment, Avantra has earned a reputation as a reliable, high-quality imagesetting solution. The Avantra Model 25 XT offers a generous 18 X 25" format that matches the world's leading 2-up presses. This model is the fastest model in the Avantra family, created for newspapers and other environments that require high productivity and output resolutions up to 2540 dpi. It uses a 180 degrees internal drum, with a visible red laser diode imaging system. The 25 XT is also capable of 200 lpi (78 lines/cm), optiSpot for 1200 and 1800 dpi, and CTP plate 8mil Setprint Plus. The Avantra also comes standard with ProstScript RT Screening, Helium-Neon film and paper, flexMedia, DualSupply, an online processing system, and a user-definable punch register system. The 25XT models also comes with additional features such as Agfa Balanced Screening, Adobe Accurate Screens, and Agfa Setprint polyester plates. These features come together to produce an imagesetter with the capabilities and performance you need to perform any task.

Specifications:

Imaging Technology – Internal drum, 180°

Maximum Format Size – 18 x 25" (457 x 635 mm)

Maximum Image Area – 17.7 x 25" (449 x 635 mm)

Imaging System – Visible red laser diode (650 nm)

Maximum Line Screen – 200 lpi (78 lines/cm)

Media Types – Standard Helium-Neon film and paper

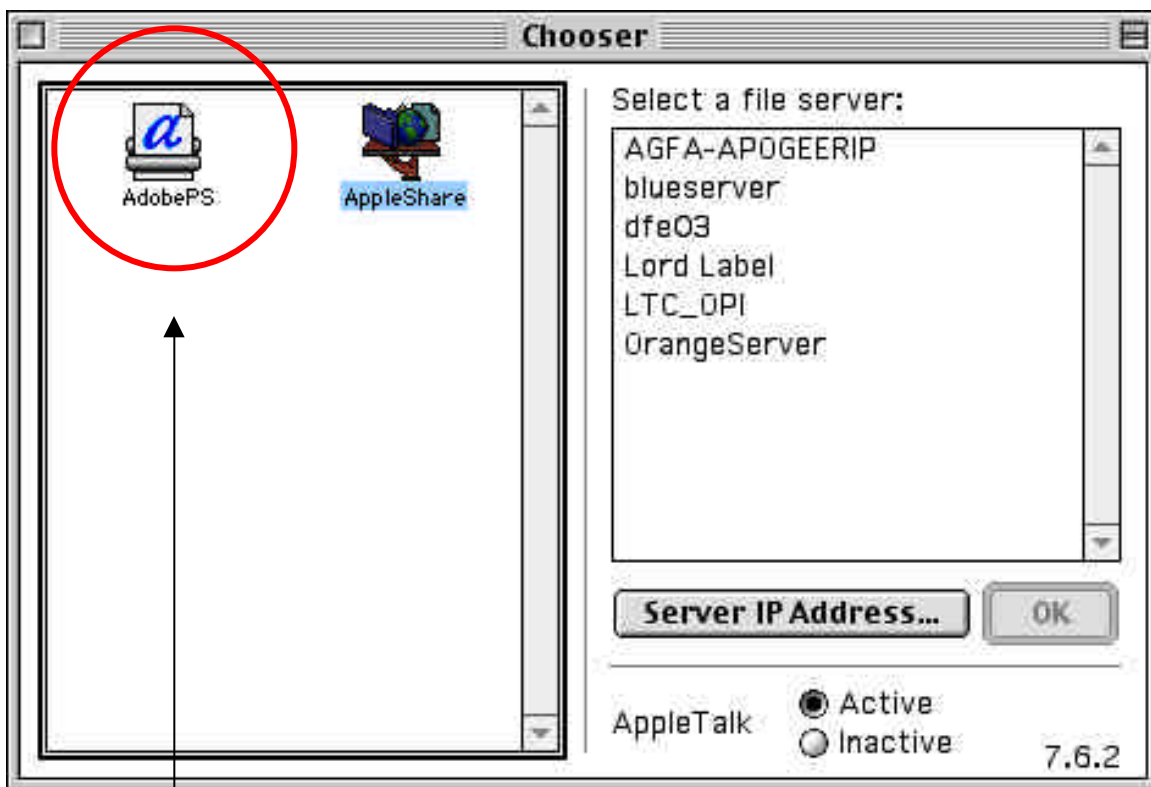
Outputting Film From Adobe Illustrator:

Step 1: Opening The Chooser

Click on the **Apple Icon** (in upper left hand corner of the desktop)

Open the **“Chooser”**

The Chooser is the Network Front Door where you can access your personal network space (AppleShare) or in this case choose your output device. The “Adobe PS” is the list of all the available output devices connected to the Local Network.

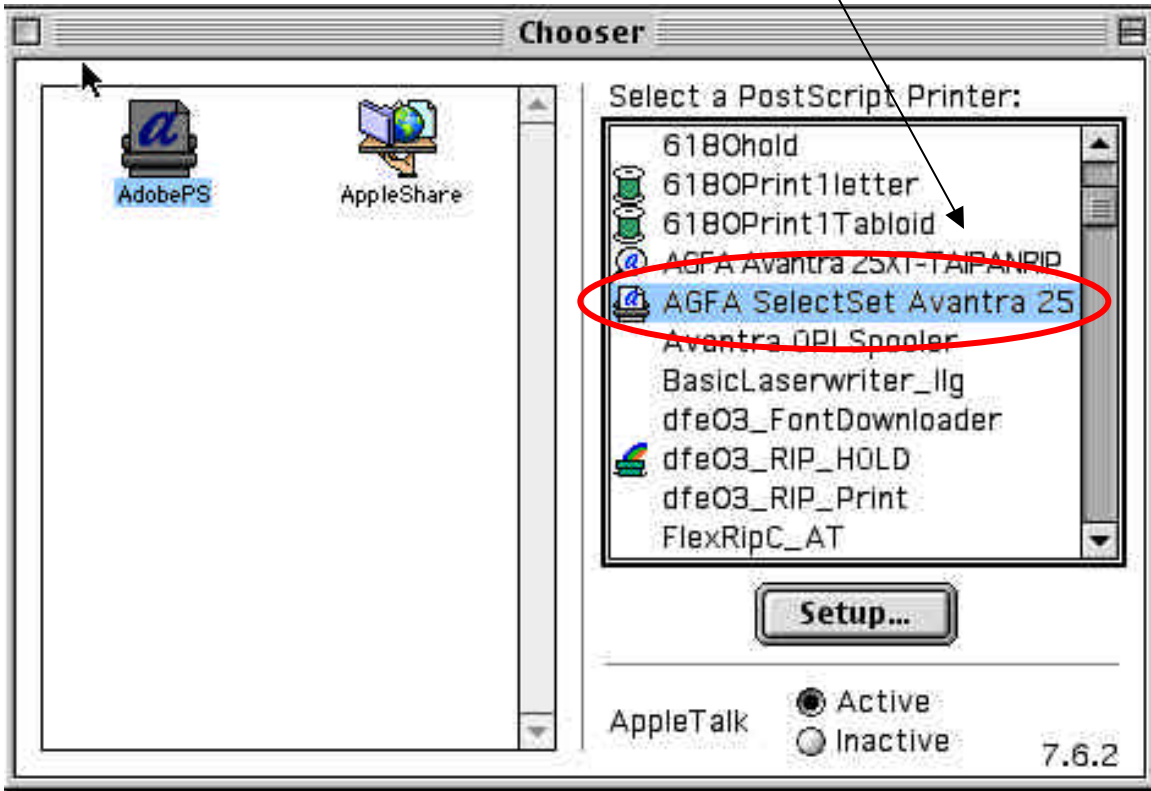


Select **“Adobe PS”**

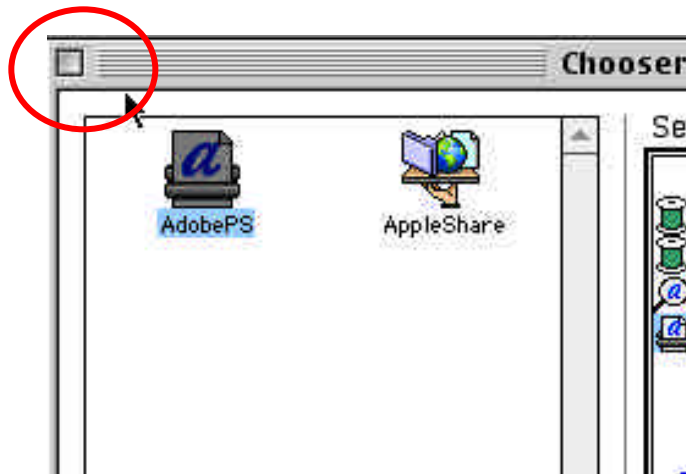
By Double Clicking **“AdobePS”** a drop list will appear that will list all possible output devices.

Step 2: Selecting your Output Device

In the list of output devices, Select “**AGFA SelectSet Avantra 25**” and “Double-Click”



Close “**Chooser**” by clicking the square icon in the upper left hand corner of the chooser.



Step 3: Software Preparation (Adobe Illustrator v. 9.0)

Open “**Adobe Illustrator**”

Click on the apple icon in the upper left hand corner of the desktop and select “**Favorites**” > “**Adobe Illustrator 9.**” This will open Adobe Illustrator.

Open the File that is to be outputted to Film by clicking “**File**” and then “**Open**”

After Document is opened and approved for output (must get instructor’s approval) Click “**File**” and then “**Separation Set-up**” and there will be a Dialogue Box that opens up.

***NOTE:** In this step, you will be describing to the computer how your file has to be arranged digitally to be sent to your output device. All output devices have there own language in which they communicate with the computer, and in this step you are merely identifying the language to be used.*

Click “**Open PPD**”

Click “**Printer Description**” and then “**Extensions**” and then “**Printer Description**”

Select “**Avantra 25 XT**”

(IMPORTANT) Pick Appropriate Page Size

***NOTE:** You must pick the appropriate page size because all jobs sent to the output device will not have the same dimensions, therefore you must know your dimensions in order to select the appropriate page size.*

Click the check box “**Include Printer’s Mark**” in order to print trim marks and center lines which are required by your instructor.

In the drop down boxes below the Printer Description:

Select “**Right Reading/Positive**” in the first box.

Select “**Halftone 133/2400AS**” in the second box.

Select “**ABS**” in the third box.

Select “**STD**” in the fourth box.

Click “**OK**” which saves your setting in the “**PPD**” and returns you to the “**Separation Setup**” Dialogue Box.

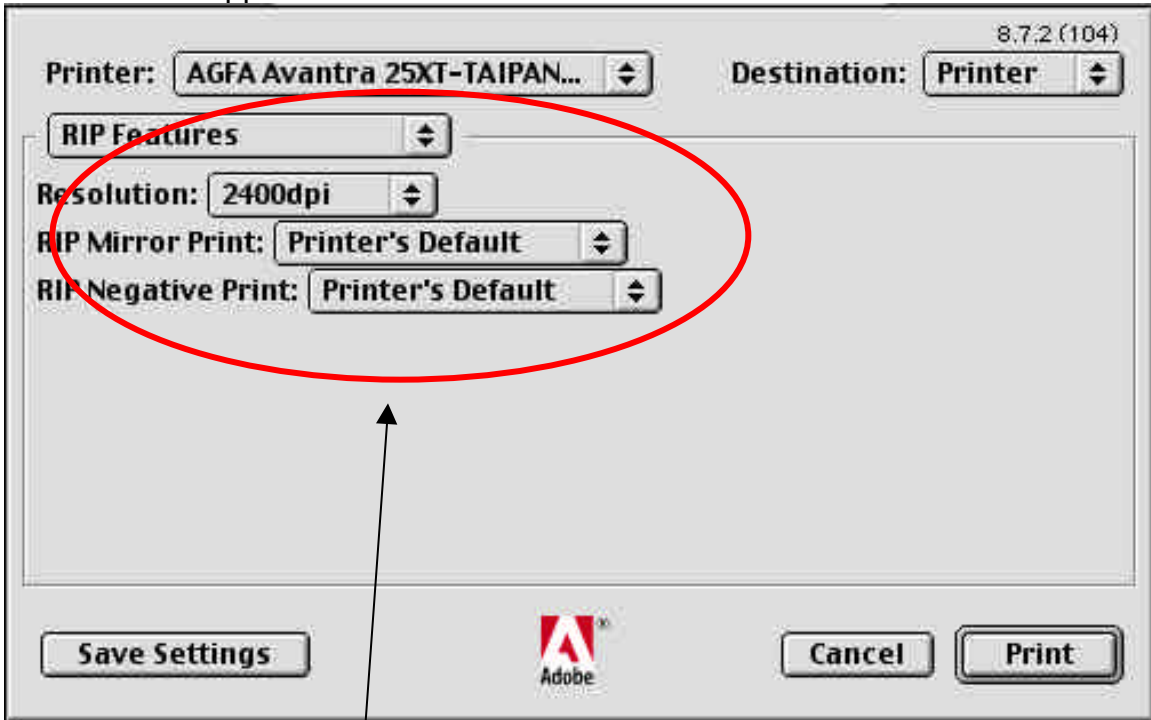
In the “**Separation Setup**”, Select “**separate**” for Output. This will print your Cyan, Magenta, Yellow, and Black channels on separate pieces of film.

Unified Divisions

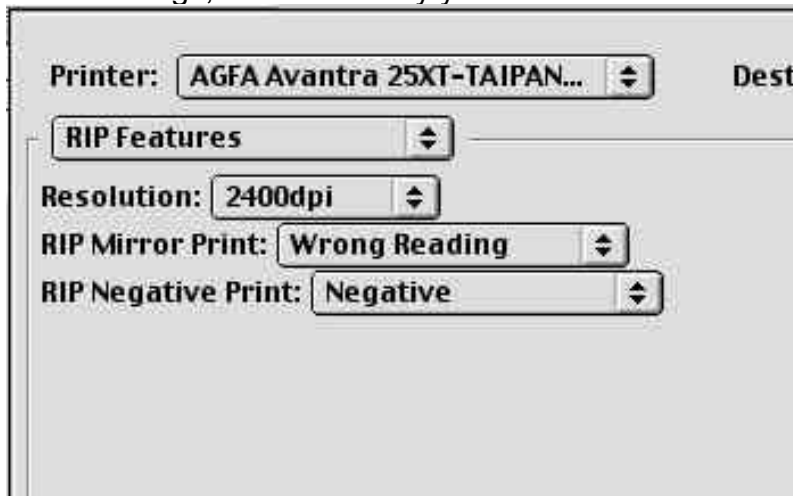
Change “**background Printing**” to “**foreground printing**”, by doing this we send our job in the foreground so that we may catch any mistakes before it is actually outputted. If you print to background your job will go straight through the RIP and can’t be stopped.

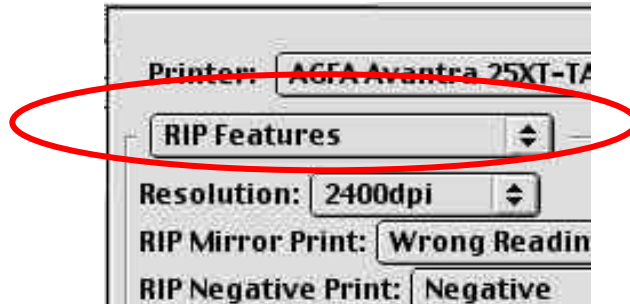
Now Select “**RIP Features**”

A Box Should appear:



You want to set the setting as they appear in this illustration below. These are the predetermined settings, which is set by your instructors.

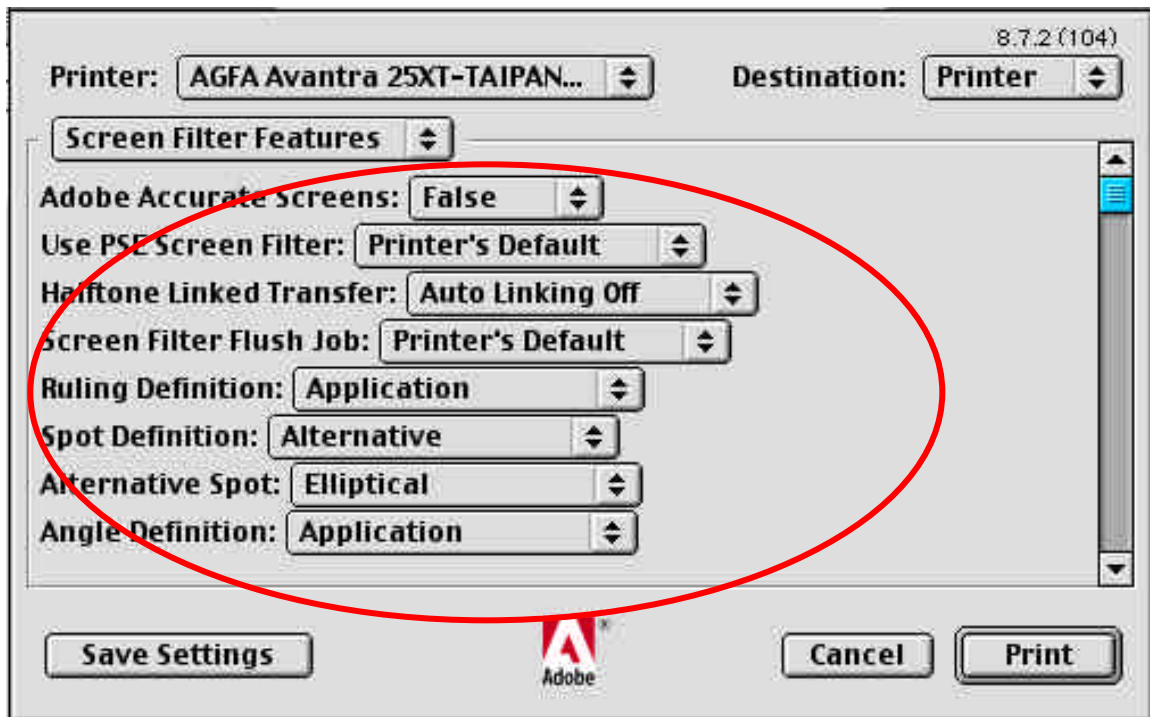




Now Click on “**RIP Features**” and a drop box will appear:

From the Drop Box Select “**Screen Filter Features**”

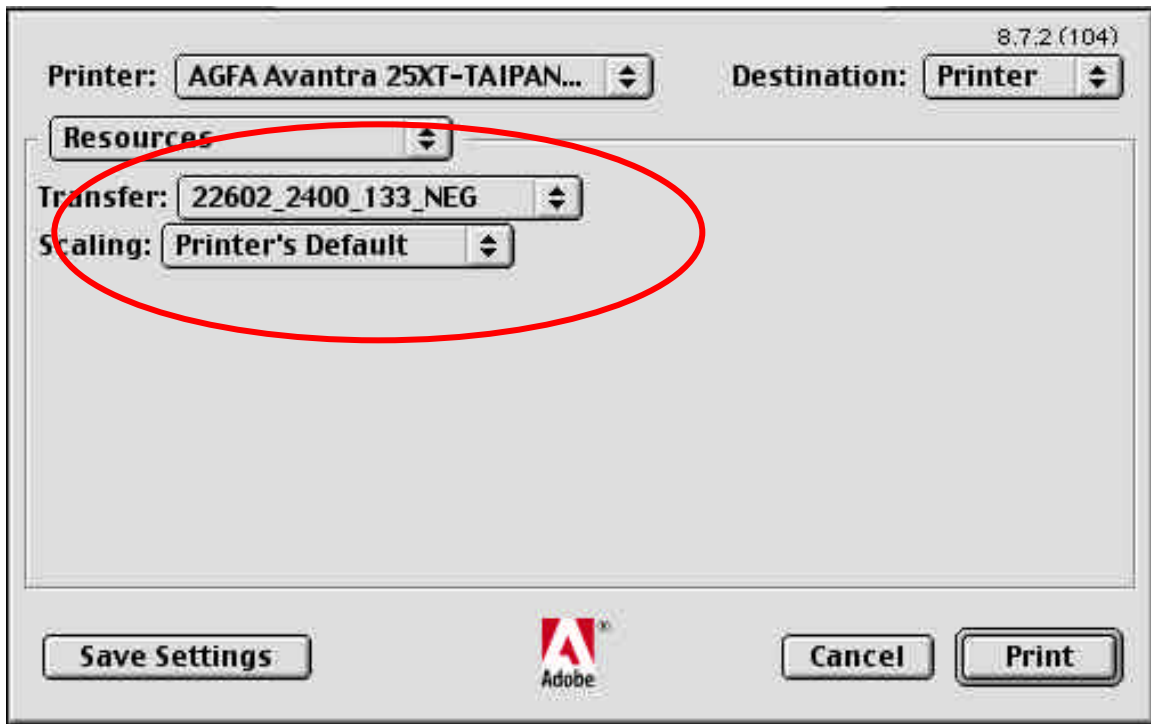
A new list of options will appear and set at default settings. Change the settings to how they appear below:



Now Select “**Screen Filter Features**” and a drop box will appear.

Choose “**Resources**”

A new list of options will appear as follows:



You will change the options to the settings seen in the illustration above. However you must realize that you must choose the correct Transfer option for the press you will make your run on or the digital proofer you may use.

After following these steps carefully, you are now ready to output film to the Agfa Avantra SelectSet 25XT. Click “**Print**” and your film will be sent successfully.

